

Kansas City Suicide Awareness and Prevention Program

Suicide Prevention KC: A Program to Integrate and Enhance Suicide Prevention

Why? The citizens of the Kansas City metropolitan region are very aware of the many sad and upsetting suicide deaths that have been occurring in the city over the past several years. Depending on the metropolitan counties involved, suicide deaths are averaging well above the national average (17 to 19 per 100,000 versus the national average of 13.8). The members of Kansas City Suicide Awareness and Prevention Program (KC SAPP), aware that there were many fragmented efforts in the city to address this problem, have initiated a collaboration process to unite these activities for better services and outcomes.

Who? KC SAPP is a 501(c)3 non-profit suicide prevention organization that was begun in 2000. Over the years, KC SAPP has been involved in projects with the KC Life Sciences Institute, CDC, SAMHSHA, the states of Kansas and Missouri and the Health Care Foundation of Greater Kansas City. The mission of KC SAPP is to eliminate suicide in the Kansas City region by promoting science, collaboration, outcomes and “lived experience” in suicide prevention, ongoing “Zero Suicide” clinical and system improvements, and changes in health policy and community awareness leading to reduced stigma and increased safety. Biographical information on KC SAPP board members and consultants is included at the end of this document.

What? With funding from the Healthcare Foundation of Greater Kansas City and the Network for Good, members of KC SAPP sent out e-mail invitations to all individuals, advocacy groups and agencies engaged in suicide prevention to meet and consider collaboration. Three meetings took place this summer (May 8, June 25 and August 15), with over 100 individuals attending from over 80 agencies (see schematic from next page). Each meeting involved a surveying process that 1) established high consensus for collaboration (90% to 100% for the seven collaboration elements), 2) identification of community barriers, 3) member interest and expertise in specific aspects of suicide prevention and 4) prioritization of first year projects. Funding is now being sought to push forward a specific suicide collaboration process and a set of first-year initiatives.

KC SAPP contact:

Mr. Garth Smith, President
10111 Hardy Drive
Overland Park, KS 66212
e-mail: garthsmith@kc.rr.com

Bill Geis, Ph.D., Science & Training
UMKC Dept of Psychiatry
e-mail: geisb@umkc.edu
816-756-1227

Participation from Individuals and Agencies:

Our impetus to convene community members and agencies came from the amount of energy in the community that existed for trying to make a difference in rising suicide rates. All three local counties (Jackson, Johnson and Wyandotte) are experiencing high rates of suicide (17 to 19.4 deaths per 100,000) compared to the national average of 13.4 deaths per 100,000. The number and breadth of attendees attests to the interest and importance of this issue.

Meeting Participant Agencies

Prevention/Schools Advocates

1. Suicide Prevention Groups

- American Foundation for Suicide Prevention – KC Chapter
- KC Suicide Awareness and Prevention
- Speak Up (Teen Prevention)
- Southeast Kansas City Youth Prevent.
- SASS-Suicide Awareness and Survivor Support

3. Non-Mental Health Agencies

- ArtsTech Kansas City - KCPD
- Building Comm Capacity, LLC
- Coterie Theatre - Chicken & Pickle
- Home Health Care - Nick & Jakes
- KFKI Radio Station - Legacy of Love
- Safe Communities KC - Zion Bapt

2. Other Prevention Groups

- Alive and Well (Trauma)
- Addiction Technology Transfer Cent.
- Bike for the Brain
- Blue Valley Well (Teen MH)
- I Am 4:13 Teens
- Kansas Suicide Prevention
- KC Psychiatric Group
- Mental Health Assoc. of the Heart.
- NAMI Johnson County
- NAMI Kansas City, MO
- Recovery House and Counsel.
- Synergy Advocacy and Prevention
- UBwellstudio
- FosterAdopt

4. Schools

- Blue Valley Schools
- Center School District
- Kansas City, KS
- Kansas City, MO
- Rockhurst College
- UMKC Med School

5. Community Funders/Federal

- Jackson County Community MH Fund
- Digital Drive
- Health & Human Services
- United Way KC

THREE MEETINGS: Representatives from over 80 KC metro agencies or departments have attended. Agencies marked in yellow were new in the second and third meetings.

Suicide Intervention and Treatment

1. Clinical Services Agencies

- Catholic Charities BH Services
- Comprehensive MH Center
- Johnson County MH Center
- KU Hospital & Behav. Health
 - KU Inpatient Services
 - KU Trauma and Injury Prev.
- Mattie Rhodes Counseling
- ReDiscover MH Services
- Synergy Youth Services
- Swope Behav. Health Svs.
- Tri-County MH Services
- Truman Med Center BH
- Vibrant Health
- Wyandot, Inc. MH

2. Children's BH Svs.

- Children's Mercy Hospital Psychiatry
- Acute Mental Health Svs
- Developmental & Behav Svs
- Crittenton Children's Center
- PACES (Wyandot, Inc.)
- Synergy Youth Services

5. Inpatient Psychiatric Care

- Cottonwood Springs Psych Hosp
- Heartland Behavioral System
- KVC Behavioral Health System
- Research Psychiatric Center
- Signature Psychiatric & BH

3. Veteran's Services

- Kansas City VA
- Leavenworth VA

4. Crisis Center Svs

- CommCARE
- HEADQUARTERS
- 22 County Crisis Line

6. Private MH Group

- The Lilac Center, LLC
- Madison Avenue Counseling
- Private Therapists (6)

8. Substance Abuse

- ATTC (UMKC)
- Heartland RADAC

7. Managed Care

- New Directions Behav Health

9. Homeless

- ReStart

Organizing and Structuring Community Suicide Prevention Initiatives, Expertise and Outcomes?

The objectives of this initiative are to 1) support existing suicide prevention initiatives, 2) help all advocates of suicide prevention to have opportunities to collaborate in multicultural approaches to reducing suicide, 3) create an on-going city-wide suicide prevention process and 4) gather data and outcomes to guide and evaluate the impact of these efforts.

Five structural elements were identified to structure this suicide prevention collaboration: 1) Leadership and Communication, 2) Data and Outcomes, 3) Training and Enhanced Suicide Care, 4) Data-Driven Strategies and 5) City-Wide Media and Prevention Campaigns.

Workgroups and activities have been organized according to this structure.

The Five Organizational Elements of Suicide Prevention KC

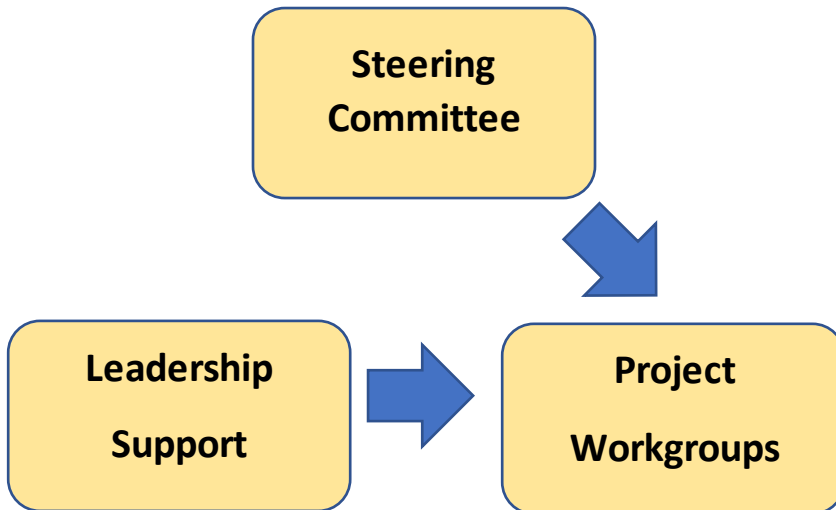


Structural Element I: Leadership and Communicaton

The framework for this project has been adapted from a Robert Wood Johnson Foundation Fighting Back initiative focusing on reducing substance abuse. Local suicide data will be used to guide goal identification and strategy development to obtain identified outcomes for the project. Goals and strategies will be reviewed and adapted annually (see Page 6). The Leadership and Communication aspect of this project involves five specific dimensions: 1) A steering group and structured workgroups to drive forward a city-wide strategy, 2) a data-driven goals and strategy process, 3) diversity and cultural tailoring of all program initiatives, 4) enhanced communication through a website and a LISTSERVE and 5) ongoing grants and sustainability work.

Steering Committee/ Strategy Workgroup

- Amanda Allen
- Andrea Perdomo-Morales, Vibrant
- Bill Art, Madison Avenue
- Courtney Lombard
- Dennis Meier, Synergy
- Emily Snow, Univ. of Kansas
- Gwen O'Brien
- Jarrold Sanderson, Catholic Charities
- Jennifer Levinson, Speak Up
- Joanna Grace Farmer
- John Burke
- Joyce Townser
- Kathryn Worland,
- Kelli Alldredge
- Kelsey Prather, Tri-County
- Kevin Timmons, Nick and Jakes
- Kristi Miller
- Kristina Knight
- Lainie Decker, NDBH
- Lauren Moyer, ReDiscover
- Lee Rathbone McCuan
- Libby Milkovich, CMH
- Marsha Morgan, Alive and Well
- Melanie Kidder
- Mike Kidder
- Niloofar Shahmohammadi, UMKC
- Olivia Desmarais
- Patty Davis
- Rochelle DePriest
- Sam Kidder
- Shayla Sullivant, CMH
- Shirley Hawkins
- Stacie Stoltz
- Teresa Strub, Mattie Rhodes
- John Thompson, NAMI
- BerryAnn Thompson, NAMI

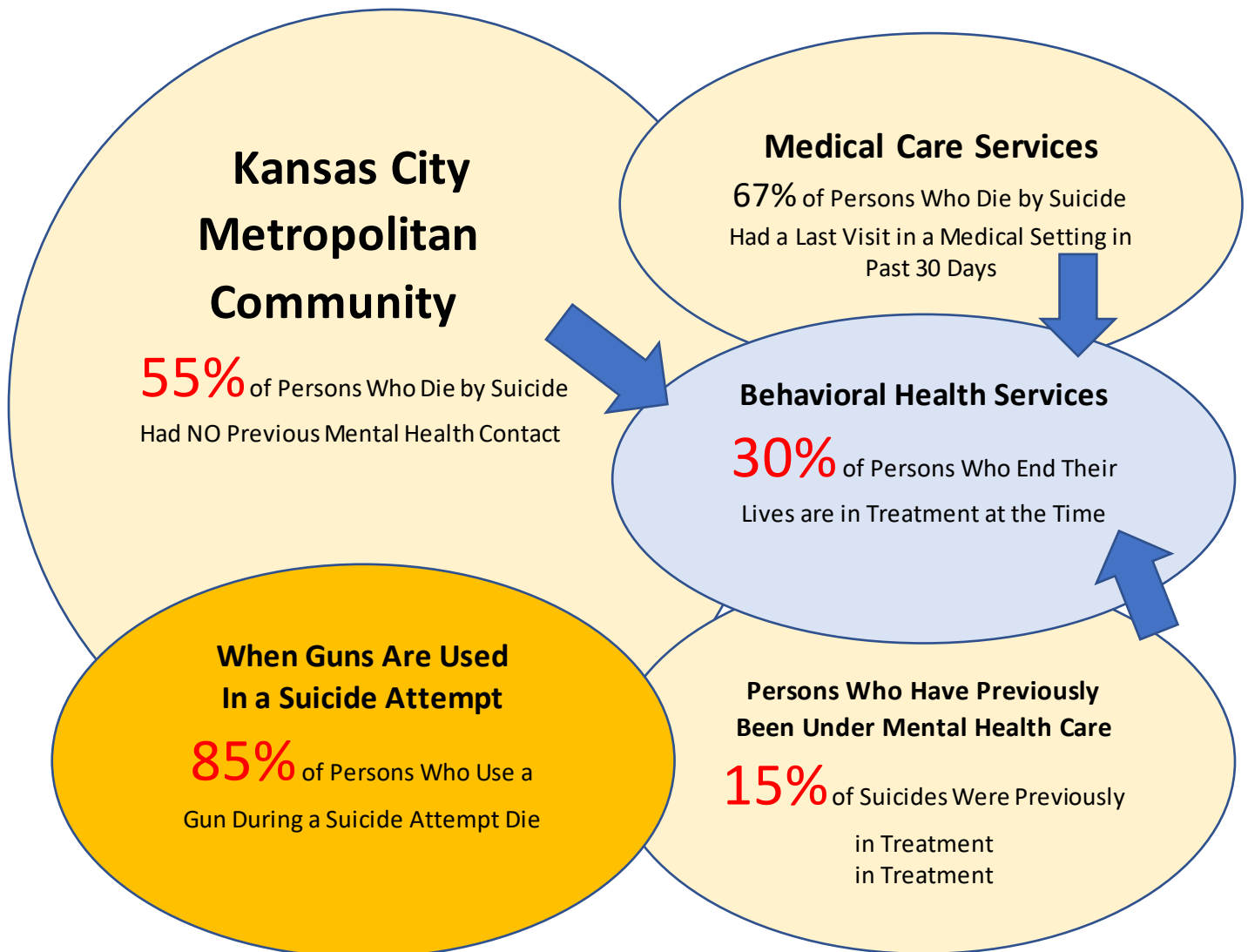


Workgroup Support. Project Workgroups will receive organizational and leadership support from a team from Innovative Leadership Strategies. This support will consist of help in structuring the workgroups, identifying and supporting strong leadership, and ensuring that goals, objective and strategies are executed.

A. A City-Wide Suicide Prevention Strategy

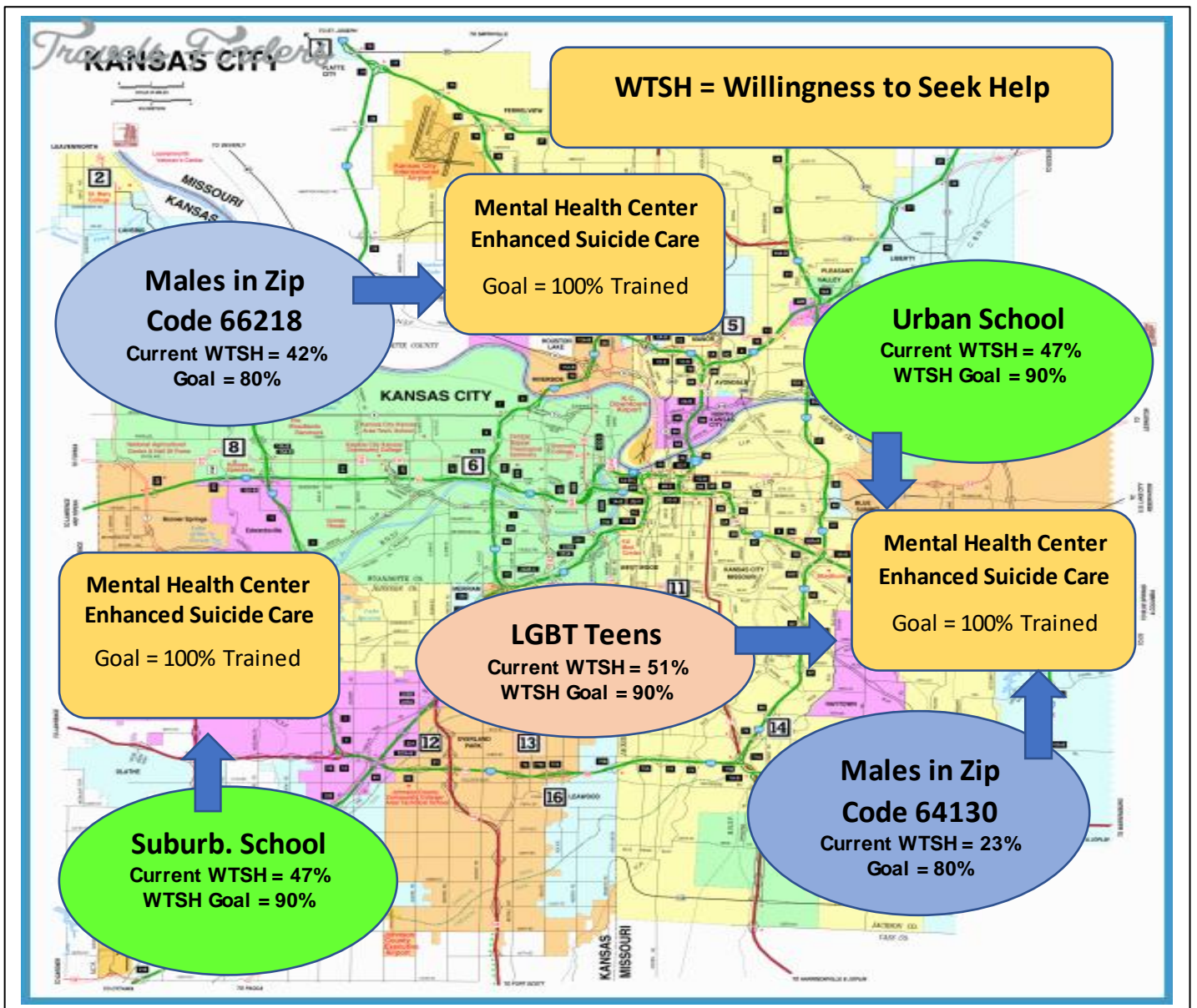
Workgroups are beginning work on a city-wide 2018-2019 strategy that focuses on top-down prevention issues (e.g., targeting the highest-rate subgroups of persons who ended their lives in suicide in recent years), as well as building a broad base for suicide prevention from the ground up (e.g., ensuring that all school and university students receive evidence-based suicide prevention). This strategy takes into account that, nationally, 55% of suicide deaths involve persons who never sought mental health care, 30% involve persons who are in treatment at the time of their deaths, and 15% involve persons who previously were in treatment. A city-wide strategy must create the conditions for persons at risk to access effective treatment, and we must extend the detection of suicidal distress and crisis into all health care facilities, schools and businesses. Additionally, 85% of the time when a gun is used, the person attempting suicide dies.

National Data on Where Suicide Deaths Occur



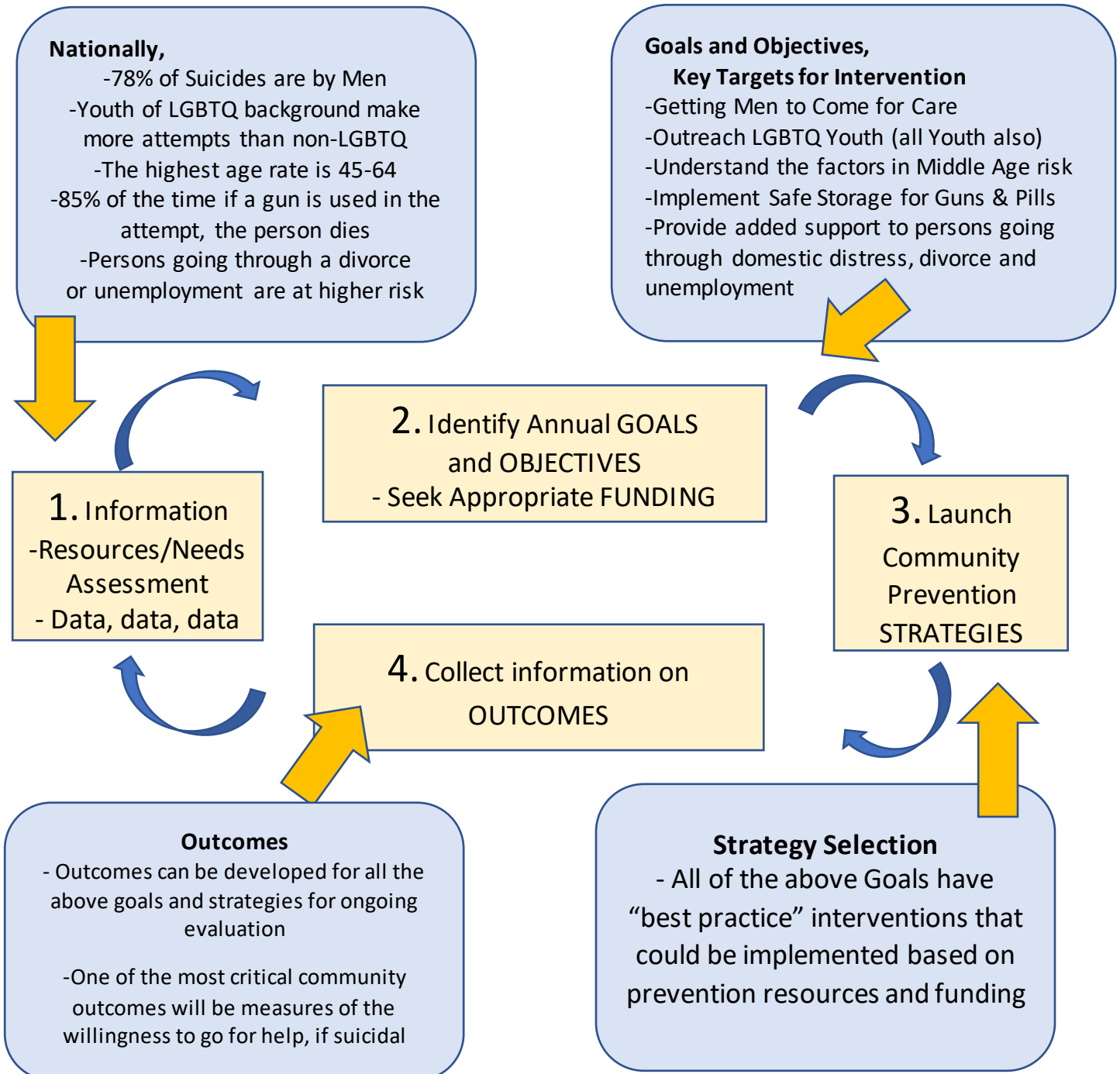
A City-Wide Vision: Help-Seeking and Enhanced Care

For success in reducing suicide in Metropolitan Kansas City, the barriers to seeking care must be diminished when a person becomes suicidal. Much activity in suicide prevention has focused on efforts to identify the warning signs of persons at risk. But, the most lethally-at-risk persons often experience their pain in isolation. Issues of stigma and internal inhibitions to seeking care must be addressed in addition to making efforts to detect persons who are overtly in pain. Thus, a fundamental outcome for all project initiatives is to promote increased willingness to seek help in all community subgroups. For example, in most schools, fewer than 50% of students report they would go for help, if suicidal. After prevention training, this attitude can increase to 80-90%. In addition to getting more persons from high-risk subgroups to go for care, we must ensure, through workforce development, that local clinicians and agencies consistently use evidence-based interventions to provide long-term remediation of suicide risk. This strategy is depicted below.



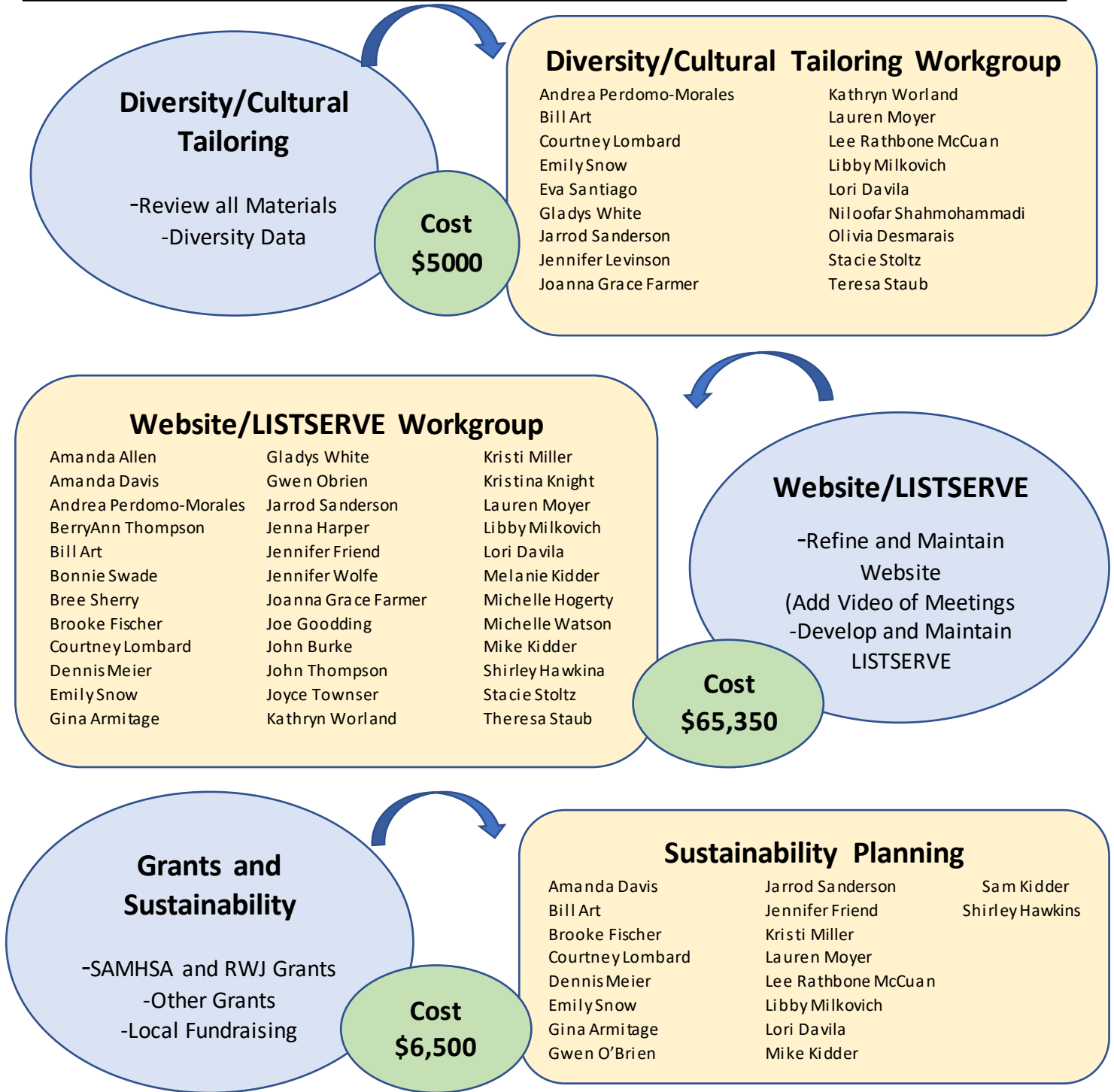
B. An Annual Goal-Objective-Strategy Outcome Process

As noted, Suicide Prevention KC will use a Robert Wood Johnson framework (Fighting Back, 2011). In surveys, coalition members identified barriers they viewed as impediments to suicide prevention success, along with beginning targets for intervention. Since detailed information about metropolitan Kansas City suicides has not yet been gathered, we are relying on national estimates to begin this goal-strategy-outcome process.



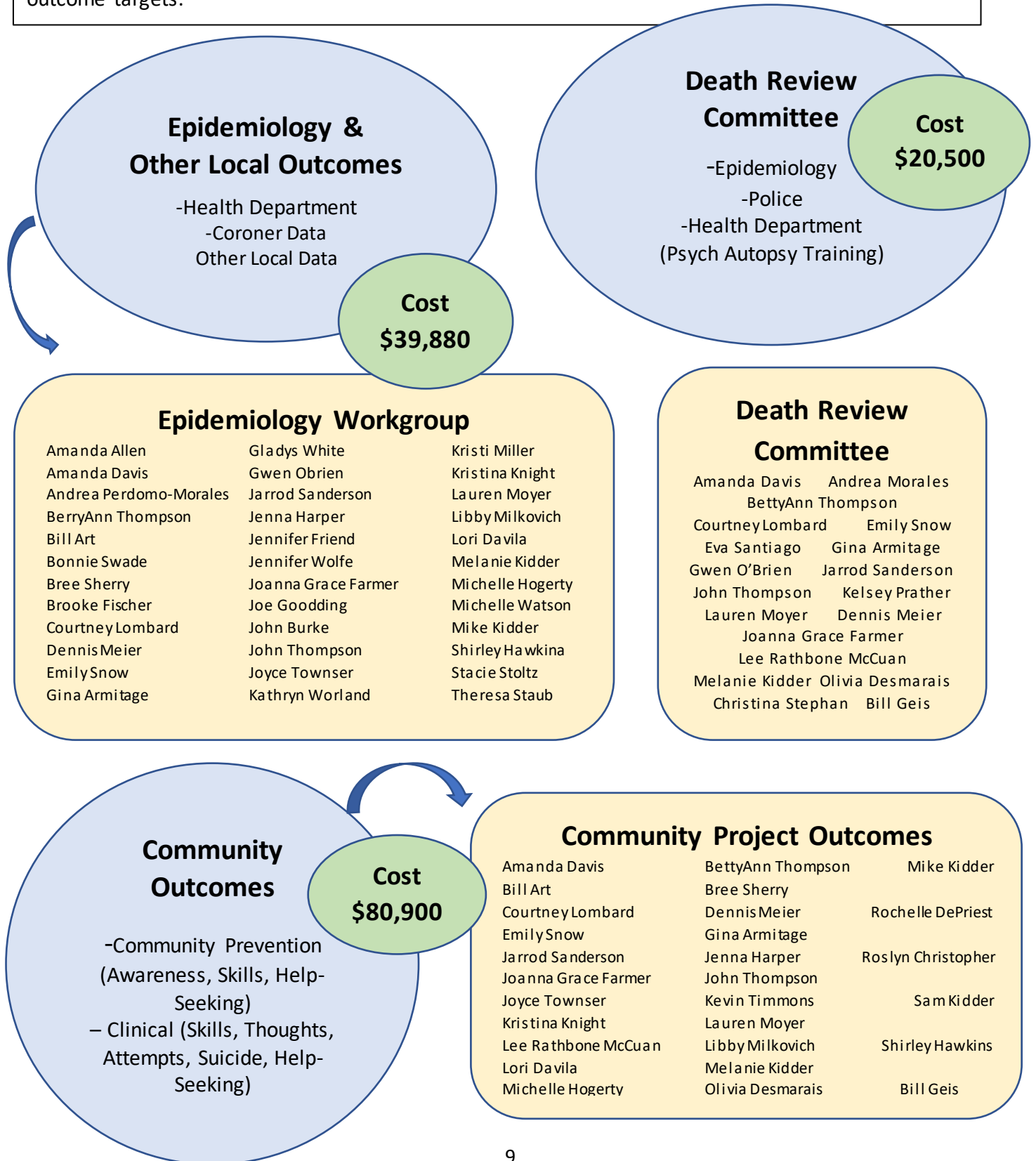
C. Leadership: Diversity/Cultural Tailoring, Website/LISTSERVE and Sustainability

Another set of leadership functions that are important for the success of this project include 1) diversity issues and cultural tailoring, 2) developing specific communication avenues (a website and a LISTSERVE for suicide prevention), and 3) sustainability planning with grants and other types of funding.

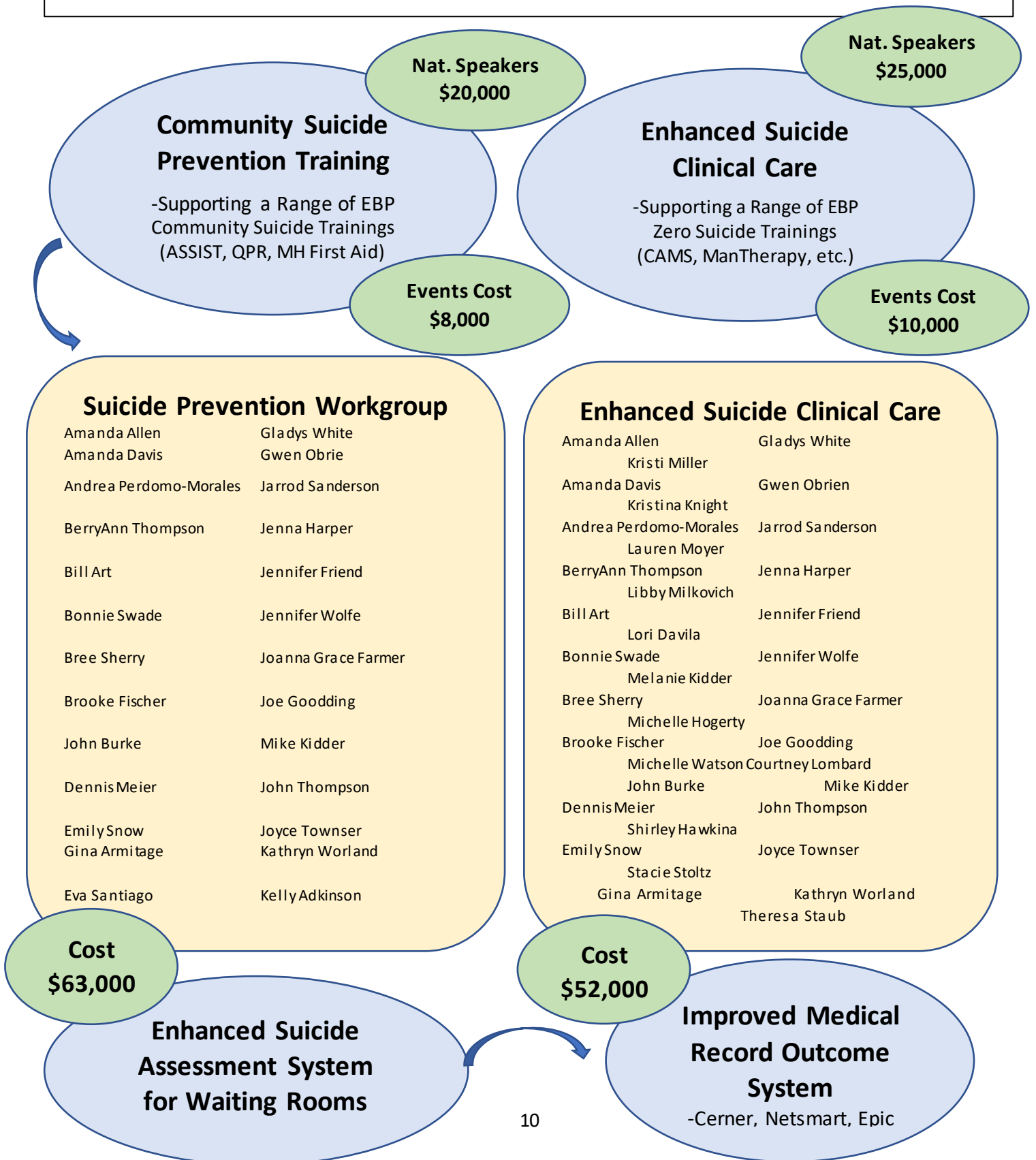


Structural Element II: Data And Outcomes

Epidemiological data (ED visits for suicide, suicide attempts, suicide deaths, demographics, etc.), along with other types of local data (mental health contacts and job, relationship, veteran, youth, etc. status) are critical for understanding the risk groups to target in Kansas City, as well as providing important outcome targets.



Structural Element III. Prevention Training and Enhanced Suicide Care



Structural Element IV: Initial Data-Driven Strategies

In the third meeting, attendees rated the importance of each of 14 different first-year projects. The results of this survey are listed below:

Potential First-Year Prevention Projects	Clinical	Non-Clinical	Total
Project			
1. Outreach to Men (the highest risk group).....	33	51	84
2. Safe Home/Gun and Pill Storage.....	47	50	97
3. Divorce and Unemployment Project.....	3	15	18
4. Special Populations (LBGT, Rural, Law Enforcement)Projects.	27	21	48
5. Faith Community Project.....	2	7	9
6. Strengthening Youth Suicide Prevention.....	48	74	122
7. Strengthening College and University Suicide Prevention. . .	12	33	45
8. Development of Greater Suicide Attempt/Lived Exp.Support	4	17	21
9. Strengthen Services to Active Duty and Veterans.....	10	25	35
10. Strengthening Enhanced Suicide Clinical Care.....	48	26	74
11. Strengthening Crisis Center and Hospital Suicide Care. . . .	16	28	44
12. Strengthening Zero Suicide Agency Outcomes/EHR support	15	16	31
13. Offering Tablet-Based Suicide Assessment & Outcomes. . . .	9	14	23

Total	Clinical	Non-Clinical
1. Strengthen Youth Suicide	1. Enhanced Suicide Care	1. Youth Suicide Prevention
2. Safe Home/Gun Storage	2. Youth Suicide Prevention	2. Outreach to Men
3. Outreach to Men	3. Safe Home/Gun Storage	3. Safe Home/Gun Storage
4. Enhanced Suicide Care	4. Outreach to Men	4. College/University
5. Special Populations	5. Special Populations	5. Crisis Center/Hospital
6. College and University	6. Crisis Center/Hospital	6. Enhanced Suicide Care
7. Crisis Center/Hospital	7. Zero Suicide Outcomes	7. Active Duty/Veterans
8. Active Duty/Veterans	8. College/University	8. Special Populations
9. Zero Suicide Outcomes	9. Active Duty/Veterans	9. Lived Experience
10. Tablet Assessment	10. Tablet Assessment	10. Zero Suicide Outcomes

Structural Element IV: Initial Data-Driven Strategies (cont'd)

Outreach to Men

- Media Campaign
- Teletherapy
- Regional Crisis Lines

Cost
\$220,250

Outreach to Men Workgroup

Andrea Perdomo-Morales
Bill Art
Courtney Lombard
Emily Snow
Eva Santiago
Gladys White
Jarrod Sanderson
Jennifer Levinson
Joanna Grace Farmer

Kathryn Worland
Lauren Moyer
Lee Rathbone McCuan
Libby Milkovich
Lori Davila
Ni loofar Shahmohammadi
Olivia Desmarais
Stacie Stoltz
Teresa Staub

Special Populations Workgroup

Amanda Allen	Gladys White	Kristi Miller
Amanda Davis	Gwen Obrien	Kristina Knight
Andrea Perdomo-Morales	Jarrod Sanderson	Lauren Moyer
BerryAnn Thompson	Jenna Harper	Libby Milkovich
Bill Art	Jennifer Friend	Lori Davila
Bonnie Swade	Jennifer Wolfe	Melanie Kidder
Bree Sherry	Joanna Grace Farmer	Michelle Hogerty
Brooke Fischer	Joe Goodding	Michelle Watson
Courtney Lombard	John Burke	Mike Kidder
Dennis Meier	John Thompson	Shirley Hawkina
Emily Snow	Joyce Townser	Stacie Stoltz
Gina Armitage	Kathryn Worland	Theresa Staub

Cost
\$25,400

Special Populations

- Males At Risk
- School Youth
- College Youth
- LGBTQ
- Veterans
- Rural

Divorce and Unemployment

- SAMHSA and RWJ Grants
- Other Grants
- Local Fundraising

Cost
\$44,500

Divorce & Unemployment Workgroup

Amanda Davis	Jarrod Sanderson	Sam Kidder
Bill Art	Jennifer Friend	Shirley Hawkins
Brooke Fischer	Kristi Miller	
Courtney Lombard	Lauren Moyer	
Dennis Meier	Lee Rathbone McCuan	
Emily Snow	Libby Milkovich	
Gina Armitage	Lori Davila	
Gwen O'Brien	Mike Kidder	

Structural Element IV (cont'd): Initial Data-Driven Strategies

Attempt and Loss Survivor Support

- Survivor Support
- Attempt Survivor Support

Cost
\$16,250

Attempt and Loss Survivor Support

Andrea Perdomo-Morales	Kathryn Worland
Bill Art	Lauren Moyer
Courtney Lombard	Lee Rathbone McCuan
Emily Snow	Libby Milkovich
Eva Santiago	Lori Davila
Gladys White	Niloofer Shahmohammadi
Jarrod Sanderson	Olivia Desmarais
Jennifer Levinson	Stacie Stoltz
Joanna Grace Farmer	Teresa Staub

Faith Community Project

James Cochran	Gladys White	Kristi Miller
Amanda Davis	Gwen Obrien	Kristina Knight
Andrea Perdomo-Morales	Jarrod Sanderson	Lauren Moyer
BerryAnn Thompson	Jenna Harper	Libby Milkovich
Bill Art	Jennifer Friend	Lori Davila
Bonnie Swade	Jennifer Wolfe	Melanie Kidder
Bree Sherry	Joanna Grace Farmer	Michelle Hogerty
Brooke Fischer	Joe Goodding	Michelle Watson
Courtney Lombard	John Burke	Mike Kidder
Dennis Meier	John Thompson	Shirley Hawkins
Emily Snow	Joyce Townser	Stacie Stoltz
Gina Armitage	Kathryn Worland	Theresa Staub

Faith Community Project

- Develop Faith-based Suicide Prevention Curriculum
- Youth Curriculum

Cost
\$4400

Strengthening Youth Prevention

- SAMHSA and RWJ Grants
- Other Grants
- Local Fundraising

Cost
\$75,000

Youth Suicide Prevention Workgroup

Amanda Davis	Jarrod Sanderson	Sam Kidder
Bill Art	Jennifer Friend	Shirley
Hawkins		
Brooke Fischer	Kristi Miller	
Courtney Lombard	Lauren Moyer	
Dennis Meier	Lee Rathbone McCuan	
Emily Snow	Libby Milkovich	
Gina Armitage	Lori Davila	
Gwen O'Brien	Mike Kidder	

Structural Element V: Media and City-Wide Campaigns

Active Duty/Veterans/Police

-Suicide Prevention
-Clinical Skills

Military/First Responder Workgroup

Andrea Perdomo-Morales	Kathryn Worland
Bill Art	Lauren Moyer
Courtney Lombard	Lee Rathbone McCuan
Emily Snow	Libby Milkovich
Eva Santiago	Lori Davila
Gladys White	Nilooofar Shahmohammadi
Jarrod Sanderson	Olivia Desmarais
Jennifer Levinson	Stacie Stoltz
Joanna Grace Farmer	Teresa Staub

Cost \$17,500

Safe Home/Gun Storage Workgroup

Amanda Allen	Gladys White	Kristi Miller
Amanda Davis	Gwen Obrien	Kristina Knight
Andrea Perdomo-Morales	Jarrod Sanderson	Lauren Moyer
BerryAnn Thompson	Jenna Harper	Libby Milkovich
Bill Art	Jennifer Friend	Lori Davila
Bonnie Swade	Jennifer Wolfe	Melanie Kidder
Bree Sherry	Joanna Grace Farmer	Michelle Hogerty
Brooke Fischer	Joe Goodding	Michelle Watson
Courtney Lombard	John Burke	Mike Kidder
Dennis Meier	John Thompson	Shirley Hawkins
Emily Snow	Joyce Townser	Stacie Stoltz
Gina Armitage	Kathryn Worland	Theresa Staub

Safe Home/Gun Storage Project

-Refine and Maintain Website
(Add Video of Meetings)
-Develop and Maintain LISTSERVE

Cost \$111,300

College/University Prevention

-Collaboration
-Training

Vulnerable Groups Campaign

Amanda Davis	Jarrod Sanderson	Sam Kidder
Bill Art	Jennifer Friend	Shirley Hawkins
Brooke Fischer	Kristi Miller	
Courtney Lombard	Lauren Moyer	
Dennis Meier	Lee Rathbone McCuan	
Emily Snow	Libby Milkovich	
Gina Armitage	Lori Davila	
Gwen O'Brien	Mike Kidder	

Cost \$10,800

Kansas City Suicide Awareness and Prevention Program

Mission

KC SAPP is a 501(c)3 Nonprofit Organization

The mission of the Suicide Awareness and Prevention Program (KC SAPP) is to eliminate suicide in the Kansas City region by promoting science, collaboration, outcomes and “lived experience” in suicide prevention, ongoing “Zero Suicide” clinical and system improvements, and changes in health policy and community awareness leading to reduced stigma and increased safety.

Past History

- 2002 Start of KC SAPP (School Prevention 2002-2003) Urban, rural and suburban schools.
- 2004 Collaboration with Kansas City Life Sciences Institute - Strategic Plan
- 2005 Center for Disease Control “PREVENT” Grant University of North Carolina
- 2006 Agreements with 11 of 14 School District to Support School Suicide Prevention
- 2007 Missouri State Town Hall Meeting – Suicide Prevention School Suicide Prevention
- 2008 Hosted Policy Conference: Surgeon General Steven Galson and SAVE’s Dan Reidenberg
- 2009 to 2018 Multiple Clinical Training Events – Work with Center District and KCMO Schools

Board Members and Consultants

(Attorney: Cullin B. Hughes, Esq. Posinelli Law)

<p>President Garth P. Smith, MPA Suicide Prevention Advocate</p>		<p>Vice President Gary Christ, LCSW, LCAC Juvenile Risk Prevention</p>	
<p>Garth Served as the Director of Network Operations for New Directions Behavioral Health for many years and has supported KC SAPP by serving as secretary and then treasurer. He previously worked at Blue Cross and Blue Shield’s Blue KC and TWA. He is an Adjunct Professor at Ottawa University, and has been active in other community initiatives and boards including the Mental Health Case Management Group, Mid America Assistance Coalition and the Shawnee Mission School Board.</p>		<p>Gary has been involved in a range of administrative and clinical roles over the past 35 years, including combining the Mental Health Associations in Kansas City, then taking a Senior Director role at the National MHA in Washington, DC, where he did research, advocacy and public education focusing on at-risk youth. With Clinical Associates in Lenexa, KS in recent years, Gary provides individual and family therapy to at-risk youth and their families.</p>	
<p>Programs Secretary Ursula Copeland BS Ed., MSW Public Health Advocate</p>		<p>Past President Stanley Edlavitch, Ph.D., MA. Public Health Advocate</p>	
<p>Ursula coordinates Maternal and Child Health and the Academic Health Services at the Kansas City, Missouri Health Department. She is also an Adjunct and Field Instructor in the Department of Social Work at UMKC. Well known in the community, she manages the Public Health Ambassadors Program, has served on the board at Samuel U. Rodger Health Center, coordinated a program for Sickle Cell Anemia and provided grant management for an HIV/AIDS grant. She has non-profit experience with the Red Cross and the Church Health Ministry Coalition. She is a frequent consultant to local schools.</p>		<p>Stan is a co-founder of KC SAPP. He retired as Professor of Epidemiology in 2009 at UMKC but has kept active in causes related to suicide and pharmacoepidemiology. He was part of a range of suicide prevention and intervention projects from 2000 through 2014 with Dr. Geis. These have included school-based suicide prevention, a CDC prevention initiative, several HCF projects related to suicide assessment and a GLS grant to the state of Kansas.</p>	

<p>Treasurer Sarah Ingram-Eiser Mental Health Activist</p>		<p>Science & Training Bill D. Geis, Ph.D. Science and Training</p>	
<p>Sarah has been an advocate and activist for mental health causes throughout her career in Kansas City healthcare, and she has been a longtime supporter of efforts to reduce suicide in Kansas City. This has led her to a number of different roles including community volunteer, Chair of the Western Missouri Mental Health Advisory Board, President of the Kansas City Association for Mental Health, serving on the board of the Mental Health Association in Missouri and being appointed to the Blue Ribbon Committee by the Missouri Department of Mental Health.</p>		<p>Bill was one of the co-founders of KC SAPP and has been the Director of Behavioral Health Research for the Department of Psychiatry at UMKC Med School for over 30 years. After a decade as Clinical Director at TMC BH, he has involved himself in projects, research and training in suicide prevention funded by CDC, SAMHSA, RWJ and HCF. In the last decade, he has trained over 5,000 clinicians in aspects of Zero Suicide and served as the Clinical Division Director of the American Association of Suicidology.</p>	
<p>Board Member Lainie Decker, J.D., M.S. Public Policy & Advocacy</p>		<p>Prevention Consultant Monica Lang Reintjes, ABD, LPC</p>	
<p>Lainie has been a mental advocated and public policy expert in Kansas City for many years. She is an attorney but also has a Master’s Degree in journalism. She is currently the Corporate Affairs and Advocacy Director for New Directions Behavioral Health—the managed behavioral health arm of Blue Cross and Blue Shield. In Kansas City, she has been involved in many projects and on many boards, including the Kansas City Healthcare Community Society, Suicide Awareness Survivor Support, and she serves on the planning committee the annual Mental Health KC Conference.</p>		<p>Monica is a doctoral candidate in Educational Psychology at the University of Kansas and will finish her Ph.D. this fall. She works closely with school districts to tailor training for teachers, administrators, school counselors, and students, using creative approaches and practical, culturally-sensitive applications. She is passionate about school-based mental-health services, and research focused on social emotional learning, multicultural/diversity training, and suicide prevention. She has functioned as a bilingual therapist at Mattie Rhodes Counseling, was a behavioral health screener for the Wyandotte Bull Doc Clinic and is a Yellow Ribbon Suicide Prevention program trainer.</p>	
<p>Epidemiological Consultant Christina Stephan, M.D. Science & Technology</p>		<p><u>KC SAPP Assets</u></p> <ol style="list-style-type: none"> 1) Clinical and Suicide Expertise--Suicide & Trauma 2) Experience In Clinical Interventions and Training for Suicide & Trauma 3) Science/Data (Evaluation – Epidemiology— Implementation – Outcomes Development) 4) Strategies for Community Prevention 5) Zero Suicide Expertise – Enhanced Suicide Care 6) Use of novel information technologies 	
<p>Christina is a physician and epidemiologist who brings significant experience (at the University of Missouri and Mayo Clinic) in data collection, electronic records improvement, systems integration and information technology to current KC SAPP projects. She is passionate about improving children’s and adult health care, and she is currently working on developing an opioid monitoring system in Kansas City.</p>			